



CONNECTING MISSOURI & ILLINOIS

TOUCHDOWN!

WORKERS CONNECT ROADWAY TO ILLINOIS, MISSOURI SHORE

Ironworkers on the Mississippi River Bridge project reached land in early March as crews installed the steel beams for the section of roadway between the bridge and Missouri and Illinois.

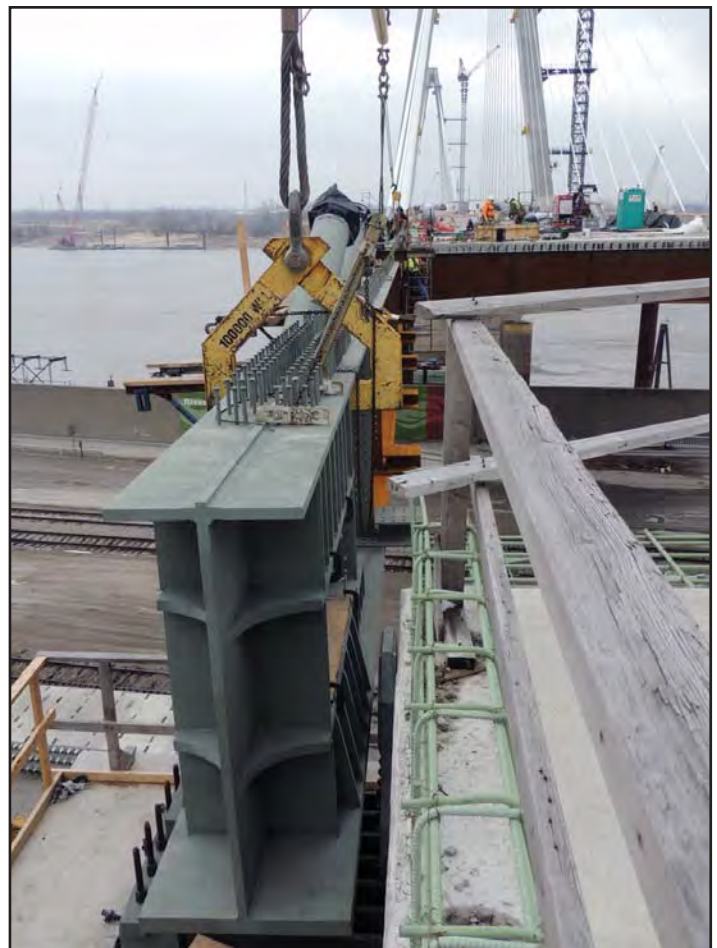
The bridge has not connected in the center because the shore portion of the bridge is shorter than the middle. Engineers expect the bridge to meet in the middle in June.

Although the bridge is now connected to land, crews have not started installing the driving surface between the bridge and land, yet. Since the middle is longer, crews have to install concrete weights on the

back portion, called the backspan.

“One of the key elements is still making sure we keep the bridge balanced on the towers. When crews install a new section in the middle, they add one of the counterweights to backspan,” said Greg Horn, MRB project director.

Once the bridge meets in the middle, crews still have to construct barrier, install signing and lighting, paint the bridge and several other tasks. Horn estimates that commuters will be able to use the new bridge and associated construction by early in 2014.



Getting the first piece of steel between the bridge and the Missouri Approach into position.

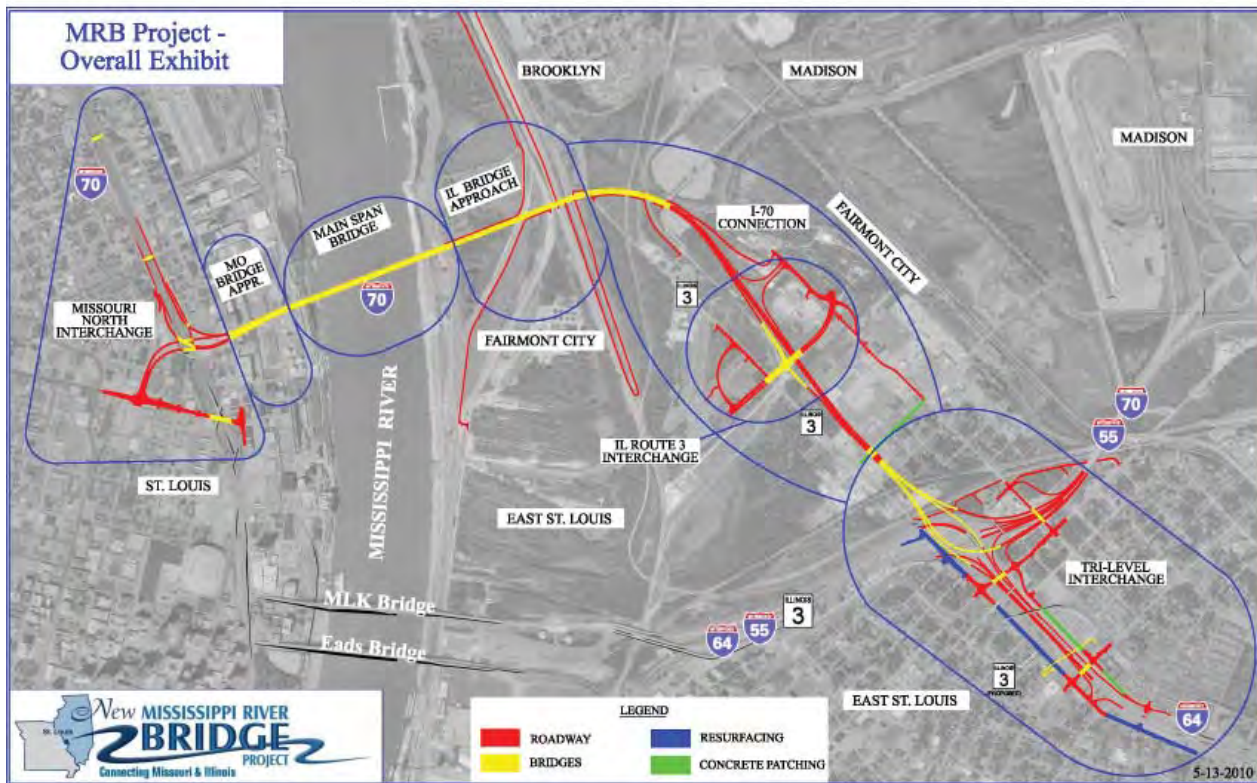
WHAT'S NEW ON THE WEB

- See the latest images on the construction camera
- See the latest DBE and workforce numbers
- See aerial photos of work on the main span and Illinois construction

See more at www.newriverbridge.org

INSIDE

Project update	2
IDOT displays archeology findings	3
Continuing to connect	4-5
Illinois bridge icons	7
Metro restarts riverboat tours	8



PROJECT UPDATE

MAIN SPAN AND MISSOURI APPROACH

Work continues to install the driving surface and the cables on the main span. More than half of the cables have been installed on the project. The roadway between the bridge and the Missouri Approach was connected in early March. The roadway between the bridge and the Illinois Approach connected in mid-March. There is about a 300-foot gap in the roadway between the two towers and engineers estimate that the roadway will meet in the middle of the river in late June or July.

The Missouri Approach is complete.

ILLINOIS APPROACH

Construction work for the Illinois Approach is proceeding well. The driving surface is nearly complete.

MISSOURI NORTH INTERCHANGE

Work continues well on the Missouri North interchange. Crews are building retaining walls and support structures on the east side of I-70 for the ramps

and bridges for the new interchange with I-70. In addition, workers are placing girders and panels for the ramps and bridges over I-70.

Crews are also rebuilding the ramp from westbound I-70 to Madison Street. That ramp has opened to general traffic; however, it closes weekdays from 9 a.m. to 3 p.m. for construction.

I-70 CONNECTION AND TRI-LEVEL INTERCHANGE

Construction projects along the relocated I-70 corridor and the tri-level interchange are moving along well. Crews have almost finished constructing the curved bridge over the railroad tracks and have started work to paint it. The 1st Street Bridge is essentially complete. Work continues on the Illinois Route 3 interchange bridges. Structural steel has been placed on those projects.

Work continues on the relocated I-70 bridges, with crews driving piling for the eastbound bridges. On 9th and 10th Street, crews are grading for the new roundabout at St. Clair Avenue and working on the new entrance ramp from Baugh Avenue to I-55/I-70.

IDOT UNVEILS ARCHEOLOGICAL EXHIBIT

Visitors to the Illinois Department of Transportation in Collinsville can now view some of the information and artifacts uncovered during a four year archeological study as part of the new Mississippi River Bridge project.

Archeologists on the study, which was the largest archeological dig in the United States for three years, helped unveil the new exhibit on March 19, 2013. This stationary exhibit is located in the lobby area, just outside of the Regional Conference Room, in the Department's District 8 Offices in Collinsville, Ill.

IDOT, the Illinois State Archaeological Survey (ISAS) and the Federal Highway Administration (FHWA) collaborated on the study.

Brad Koldehoff, IDOT Chief Archaeologist, gave a presentation and tour to members of the Osage Nation who were in town reviewing the progress being made on the construction of the MRB as part of their three day heritage tour. More than 25 members of the Osage Nation were present for the unveiling of the exhibit. The Osage Nation has advised and worked closely with both the Illinois and Missouri departments of transportation and FHWA during MRB construction activities. The Osage claim an ancestral link to the ancient native civilization represented by Cahokia Mounds State Historic Site.

During the presentation, Koldehoff pointed out that when construction activities got underway in Illinois for the MRB Project in 2009, only one ancient mound was identified in early historical documents for the project area.



The new archeological exhibit at IDOT.

This mound was located on the edge of what was known as the National City Stockyards in 1880s. However, during the archaeological excavations for the installation of a new waterline along the corridor of the new I-70 alignment, remnants of an unrecorded mound were discovered, documented, and preserved. This mound, designated as Feature 2000 by ISAS archaeologists, represented a significant discovery.

Although the upper part of the mound was originally removed in the 1870s as the stockyards were constructed, the remainder of the mound is of great importance to tribes and other groups and organizations. IDOT modified construction plans to avoid the area and created a permanent archaeological preserve that covers approximately one acre and is now known as the "Feature 2000 Preservation Area".

This was the most significant find from the archeological survey conducted from 2009 to 2012. This project offered teams of ISAS archaeologists the unique opportunity to uncover and document new and important artifacts and information about the region's recent and ancient history.

Archaeologists working on the MRB project uncovered the remnants of two cities: the Euro-American city of East St. Louis dating from the 1800s to the early 1900s, and an ancient Native American city, buried beneath the Euro-American city, dating many centuries earlier (A.D. 1000 to 1200).

The artifacts and information gathered are currently being analyzed. The results of these studies will be available soon to the general public and scientific community.

WORK CONTINUES TO CONNECT MISSOURI, ILLINOIS ACROSS RIVER



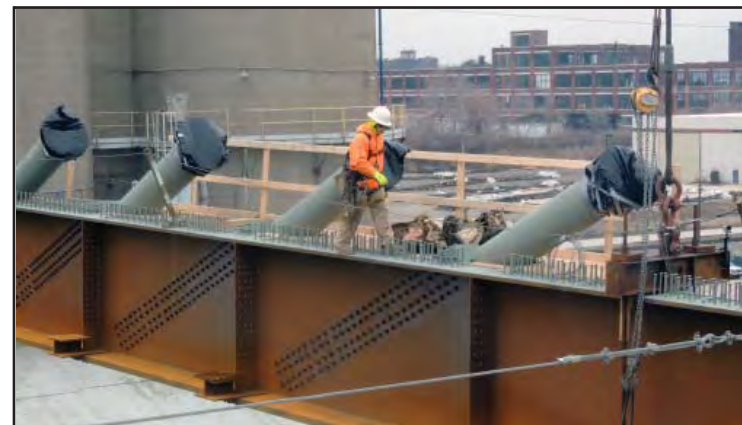
Workers place concrete for a bridge foundation in Illinois.



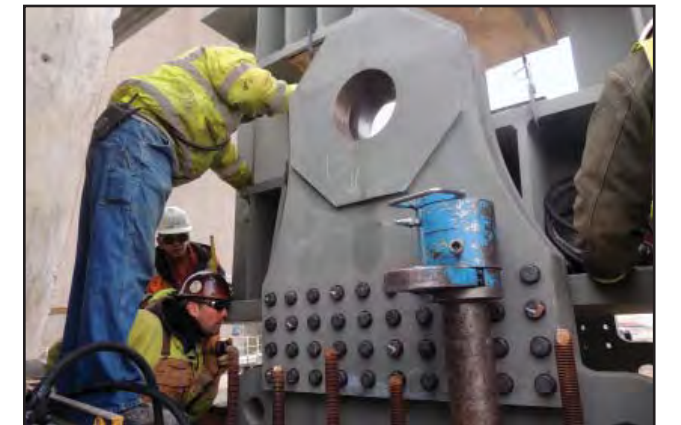
Lifting a girder off the ground ...



... swinging it into position ...



... connecting it to the bridge ...



and placing it on the Missouri Approach.



Crews are projected to meet in the center sometime in mid- to late June.



An on-the-ground look at the new ramps from the Tri-level interchange to the relocated I-70.

ILLINOIS CONSTRUCTION MEANS SUMMER IMPACTS

As crews continue to build various projects in Illinois associated with the Mississippi River Bridge project, motorists can anticipate several significant closures which may impact their drive.

In June, crews will close the ramp from eastbound I-55/70/64 to eastbound I-64 for nine consecutive days to rebuild the ramp. Drivers will detour around the closure by taking I-55/I-70 to I-255. The work is projected to begin on a Friday night after rush period and remain closed for nine days, reopening on a Monday afternoon before the afternoon rush period.

In late summer, workers will complete resurfacing projects on I-64 and I-55/I-70. This work requires overnight lane closures and several weekend interstate closures. Weekend closures will start on a Friday evening after rush and reopen before the Monday morning commute.

Crews will resurface I-64 between Illinois Route 111 and I-55/I-70. Drivers can use I-55/I-70 and I-255 to detour around the project. Workers will resurface I-55/I-70 between Illinois Route 203 and I-64. During full closures, drivers will detour to I-64 and I-255.

Specific details on weekend ramp and interstate closures and lane restrictions will be released when they become available.



Workers construct the driving surface of one of the many bridges being built to connect the Tri-Level Interchange with the new Mississippi River Bridge.



Drivers in Illinois can expect some road and ramp closures as part of constructing the Tri-Level Interchange this summer.

ILLINOIS STUDENTS CREATE ICONS FOR BRIDGES ON MRB PROJECT

Local high school students in four Illinois communities will have their work cast in concrete on bridges along the new Mississippi River Bridge project.

Concrete community icons will be installed on the new bridges constructed as part of the MRB project. These icons are already in place on the bridges at Exchange Avenue and 15th Street in East St. Louis.

The icons were developed when the Illinois Department of Transportation launched an initiative in 2002 to make sure the planned roadways and interchanges accurately reflected the communities they border.

The Community Icon Contest gave 9th through 12th grade students in Brooklyn, East St. Louis, Madison, and Venice the opportunity to design an icon used on the bridges and gateway structures that are part of the MRB project. Students were asked to create and submit an original “icon” design that depicted the pride, character, and/or history of their respective communities. Each participating school was asked to submit the three best entries to IDOT where members of the MRB Urban Design Subcommittee would select one winning icon design for each community. All designs were evaluated on: originality, artistic merit, suitability for replication in concrete and meaningfulness as a symbol of the community.

In 2010, IDOT asked community leaders in Fairmont City if they wanted to host a design contest for



The cultural icon on Fairmont City bridges.

their community since they were not included in the original contest and did not have a high school in their community. Fairmont City declined to hold a contest, but asked IDOT to work with a member of the community to develop an icon for the city. IDOT and the community approved the icon later that year,

The final icon images chosen were:

- Brooklyn – “Cultural Legacy,” by George Clower, Lovejoy High School
- East St. Louis – “City of Champions”, by Brandon Tolson and Montrai Blackburn, East St. Louis High School
- Madison – “Regional Significance,” by Theodore Whitecotton, Madison High School
- Venice – “River Heritage,”



The cultural icon on bridges in East St. Louis.

by Dorothy Chatman, Venice High School

- Fairmont City – “City of Good Neighbors,” by Lt. Noe Marquez, Fairmont City Police Department

RIVERBOATS BEGIN 2013 BRIDGE TOURS

The free public tours for the new Mississippi River Bridge are almost filled for the year. Those people interested in getting a river's eye view of the new Mississippi River Bridge construction can take a tour of St. Louis river bridges on the Gateway Arch Riverboats.

Gateway Arch Riverboats offers a tour on the first Saturday of each month at 9 a.m. Currently, they plan to hold the bridge tour in May and June; but may have additional tours later if there is still interest.

Tours cost \$14 for adults and \$8 for those 15 or younger. For more details and to make reservations, those interested can surf to: <http://tinyurl.com/2013bridgetour>.



In this picture from last year, the Gateway Arch Riverboats held a monthly tour to view on-going construction of the new Mississippi River Bridge.

FIND MORE INFORMATION ON THE BRIDGE AT WWW.NEWRIVERBRIDGE.ORG

MRB Project Office
707 N. 2nd Street, Suite 300, St Louis MO 63102
Phone: (314) 453-1785 (New number!)

